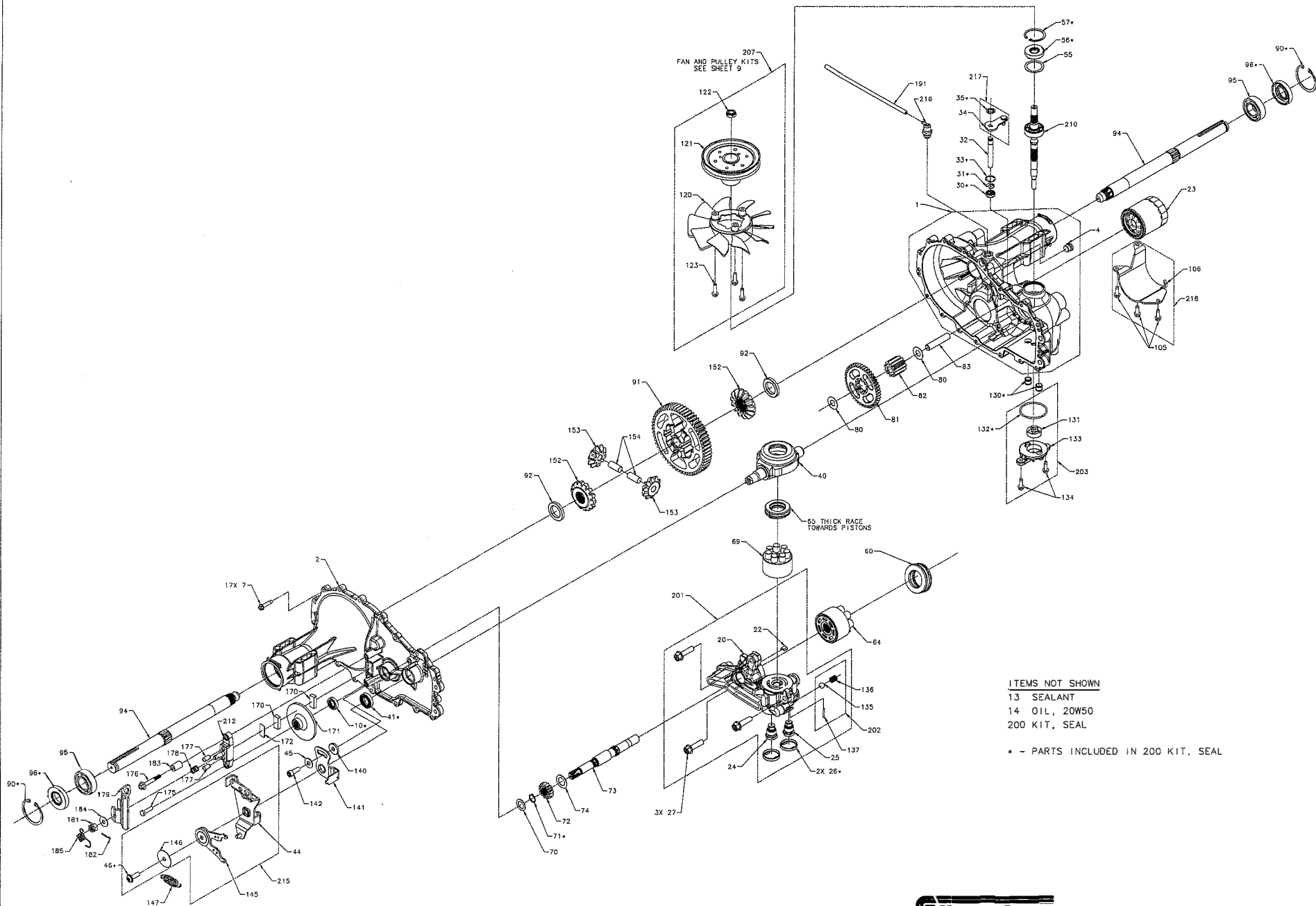


# G700 SERVICE SCHEMATIC



# G700 SERVICE SCHEMATIC

MODEL NUMBER: 

G	7				
---	---	--	--	--	--

 - 

--	--	--	--	--	--

 - 

		*	*		
--	--	---	---	--	--

 - 

--	--	--	--	--	--

CHARACTER #: 

1	2				
---	---	--	--	--	--

 - 

3	4	5	6		
---	---	---	---	--	--

 - 

7	8	9	10		
---	---	---	----	--	--

 - 

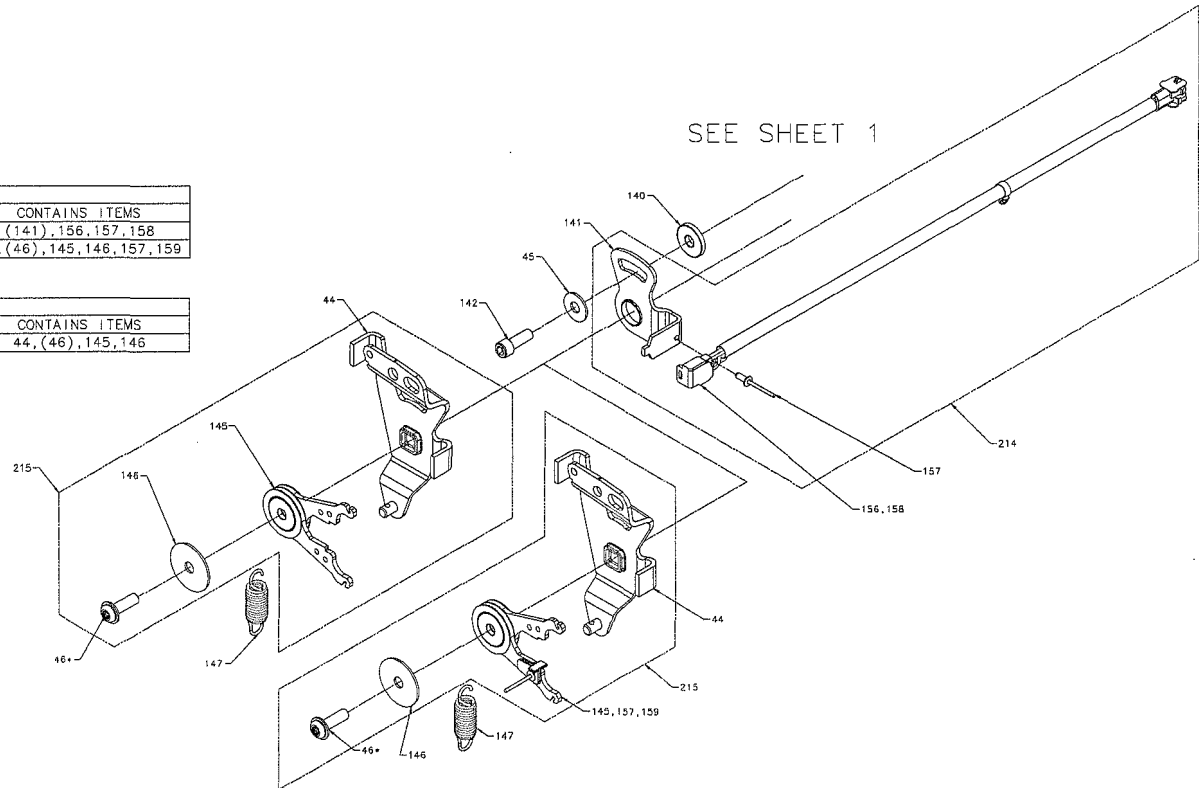
11	12	13	14		
----	----	----	----	--	--

CHAR 9		CHAR 10		ITEM	COMPONENT	DESCRIPTION	QTY
7, D		B, C		045	44130	WASHER, .24 X .88 X .06	1
				046	51812	TWCS 5/16-24 X 1.00 (PATCH)	1
				140	52527	SPACER, .320 X 1.005 X .179	1
				141	52921	ASSEMBLY, RTN, NEUTRAL ARM	1
				142	51616	SHCS 5/16-24 X 1 PATCH	1

CHAR 9		CHAR 10		ITEM	COMPONENT	DESCRIPTION	QTY
7, D		B, C		147	51605	SPRING, EXTENSION RTN - 44 LBS	1

CHAR 9		CHAR 10		ITEM	COMPONENT	DESCRIPTION	QTY	CONTAINS ITEMS
D		C		214	71750	KIT, ROS	1	(141), 156, 157, 158
				215	71771	KIT, RTN/ROS	1	44, (46), 145, 146, 157, 159

CHAR 9		CHAR 10		ITEM	COMPONENT	DESCRIPTION	QTY	CONTAINS ITEMS
7		B		215	71827	KIT, RTN BIDIRECTIONAL	1	44, (46), 145, 146



\* - PARTS INCLUDED IN 200 KIT, SEAL

ITEM	COMPONENT	DESCRIPTION	QTY
200	71632	KIT, SEAL	1

\* ( ) \* INDICATES THAT PART IS LISTED ELSEWHERE IN THE BOM AND IS AVAILABLE AS AN INDIVIDUAL PART.



# G700 SERVICE SCHEMATIC

MODEL NUMBER: 

G	7
---	---

 - 

*		*	*
---	--	---	---

 - 

--	--	--	--

 - 

--	--	--	--

 - 

--	--	--	--

CHARACTER #: 

1	2
---	---

 - 

3	4	5	6
---	---	---	---

 - 

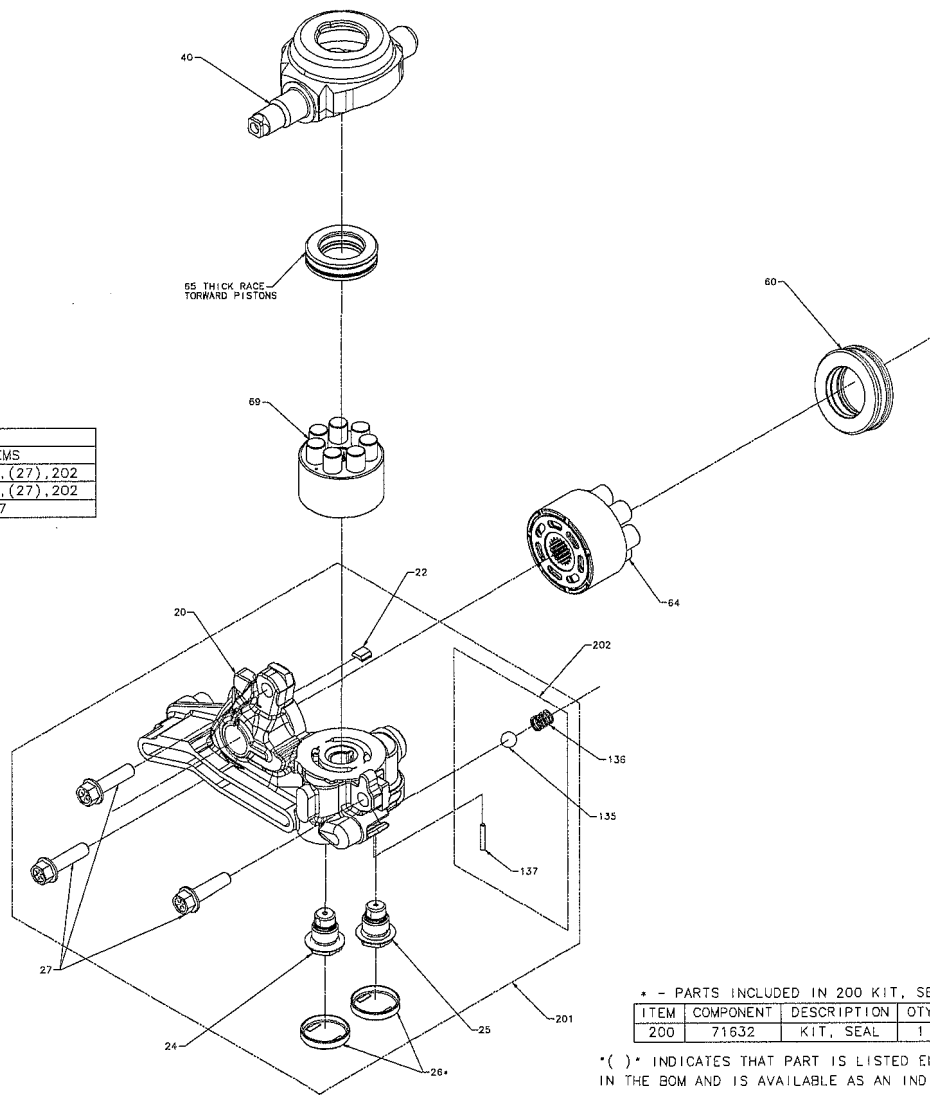
7	8	9	10
---	---	---	----

 - 

11	12	13	14
----	----	----	----

COMMON PARTS			
ITEM	COMPONENT	DESCRIPTION	QTY
022	51448	PLATE, BYPASS	1
026	52162	SEAL, PLUG 1.250 X .250	2
027	52137	HFHCS 3/8-16 X 1.5 (PATCH)	3
040	51048	TRUNNION, SWASHPLATE	1
060	51462	BEARING, THRUST	1
064	70735	ASSEMBLY, CYLINDER BLOCK, 16cc	1
065	50551	BEARING, THRUST BALL 30 X 52 X 13	1
069	70723	ASSEMBLY, BLOCK 7 PISTON	1

CENTER SECTION KITS							
CHAR 3	CHAR 5	CHAR 6	ITEM	COMPONENT	DESCRIPTION	QTY	CONTAINS ITEMS
	B	B	201	71639	KIT, CENTER SECTION, LH. CHRG	1	20, (22), 24, 25, (26), (27), 202
B	E	B	202	71708	KIT, CENTER SECTION, LH. CHRG	1	20, (22), 24, 25, (26), (27), 202
			202	71436	KIT, CHARGE RELIEF	1	135, 136, 137



\* - PARTS INCLUDED IN 200 KIT, SEAL

ITEM	COMPONENT	DESCRIPTION	QTY
200	71632	KIT, SEAL	1

\* ( ) \* INDICATES THAT PART IS LISTED ELSEWHERE IN THE BOM AND IS AVAILABLE AS AN INDIVIDUAL PART.



# G700 SERVICE SCHEMATIC

MODEL NUMBER:

G	7
---	---

*			
---	--	--	--

--	--	--	--

--	--	--	--

CHARACTER #:

1	2
---	---

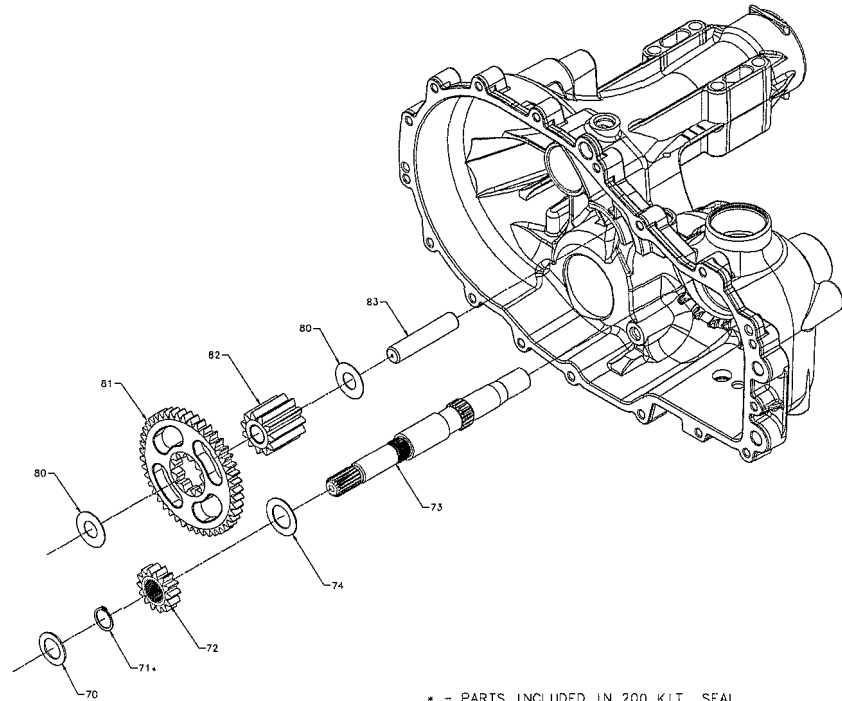
3	4	5	6
---	---	---	---

7	8	9	10
---	---	---	----

11	12	13	14
----	----	----	----

REDUCTION RATIO				
CHAR 3	ITEM	COMPONENT	DESCRIPTION	QTY
B	072	52109	GEAR, 14T	1
	081	52110	GEAR, 45T	1
	082	52583	GEAR, 11T	1

COMMON PARTS				
ITEM	COMPONENT	DESCRIPTION		QTY
070	44371	WASHER, .63 X 1.0 X .05		1
071	44145	RING, RETAINING .625 EXTERNAL		1
073	52585	SHAFT, MOTOR		1
074	51069	WASHER, .72 X 1.16 X .04		1
080	50132	WASHER, .5 X 1.0 X .03		2
083	51083	PIN, JACKSHAFT		1



\* - PARTS INCLUDED IN 200 KIT, SEAL

ITEM	COMPONENT	DESCRIPTION	QTY
200	71632	KIT, SEAL	1



# G700 SERVICE SCHEMATIC

MODEL NUMBER: 

G	7	-		*				-							
---	---	---	--	---	--	--	--	---	--	--	--	--	--	--	--

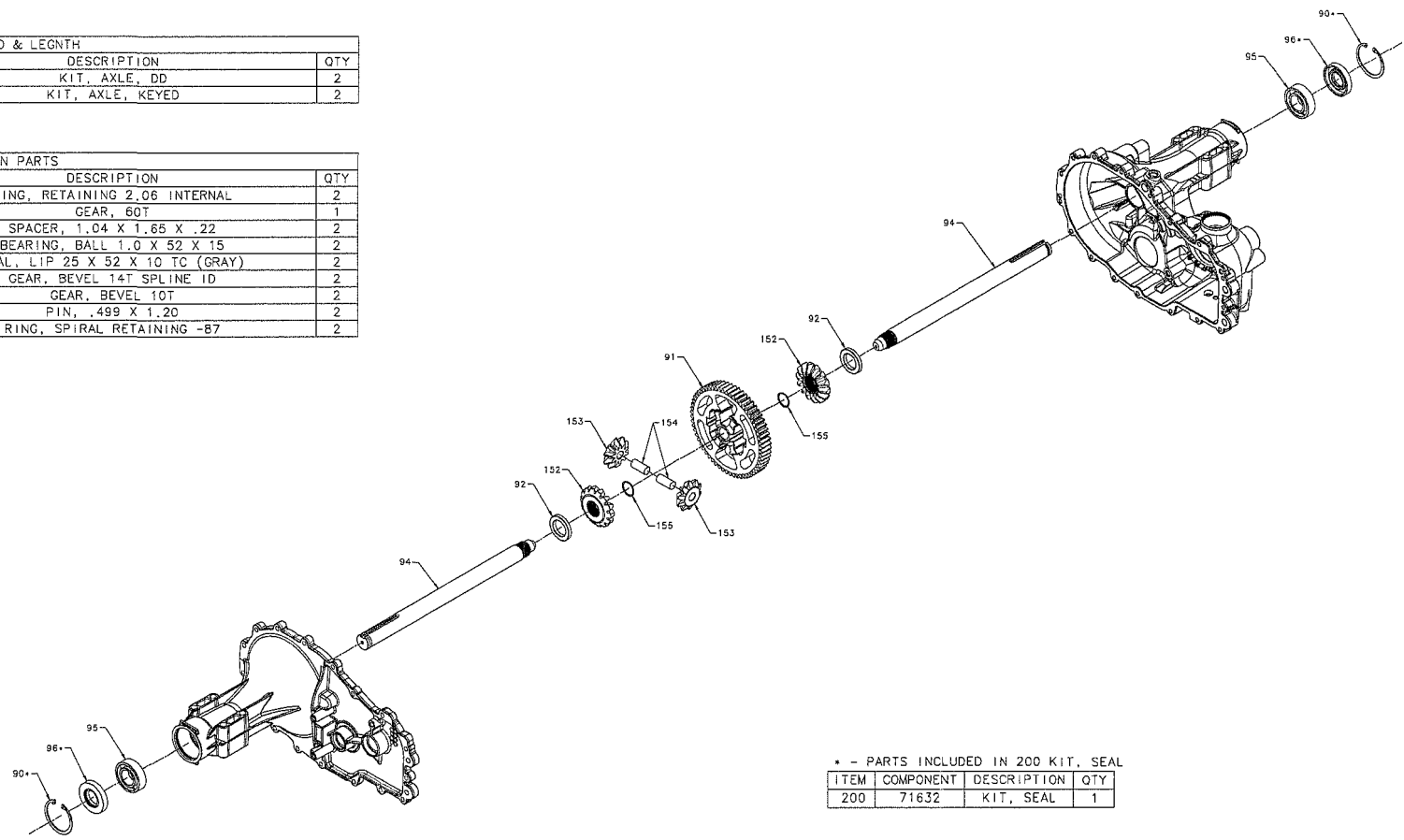
  
 CHARACTER #: 

1	2	-	3	4	5	6	-	7	8	9	10	-	11	12	13	14
---	---	---	---	---	---	---	---	---	---	---	----	---	----	----	----	----

FOR MODELS BUILT BEFORE MARCH 9TH, 2009 [SN 9068YXXXX]\*  
 [FOR MODELS BUILT ON OR AFTER MARCH 9TH, 2009 SEE NEXT PAGE]

AXLE END & LENGTH				
CHAR 4	ITEM	COMPONENT	DESCRIPTION	QTY
B		72022	KIT, AXLE, DD	2
C	094	72021	KIT, AXLE, KEYED	2

COMMON PARTS				
ITEM	COMPONENT	DESCRIPTION	QTY	
090	50859	RING, RETAINING 2.06 INTERNAL	2	
091	52577	GEAR, 60T	1	
092	51939	SPACER, 1.04 X 1.65 X .22	2	
095	50771	BEARING, BALL 1.0 X 52 X 15	2	
096	50772	SEAL, LIP 25 X 52 X 10 TC (GRAY)	2	
152	52599	GEAR, BEVEL 14T SPLINE ID	2	
153	52600	GEAR, BEVEL 10T	2	
154	52608	PIN, .499 X 1.20	2	
155	52531	RING, SPIRAL RETAINING -B7	2	



\* - PARTS INCLUDED IN 200 KIT, SEAL

ITEM	COMPONENT	DESCRIPTION	QTY
200	71632	KIT, SEAL	1

\*NOTE: HOW TO READ BAR CODE LABEL SERIAL NUMBER DATE CODE  
 EX. 9XXXXXXX CHARACTER 1 = YEAR (2009), CHARACTERS 2, 3 & 4 ARE 1234  
 JULIAN DATE CODE 001 THRU 365 (001 = JAN 1; 032 = FEB 1; 365 = DEC 31)

# G700 SERVICE SCHEMATIC

MODEL NUMBER: 

G	7	-		*										
---	---	---	--	---	--	--	--	--	--	--	--	--	--	--

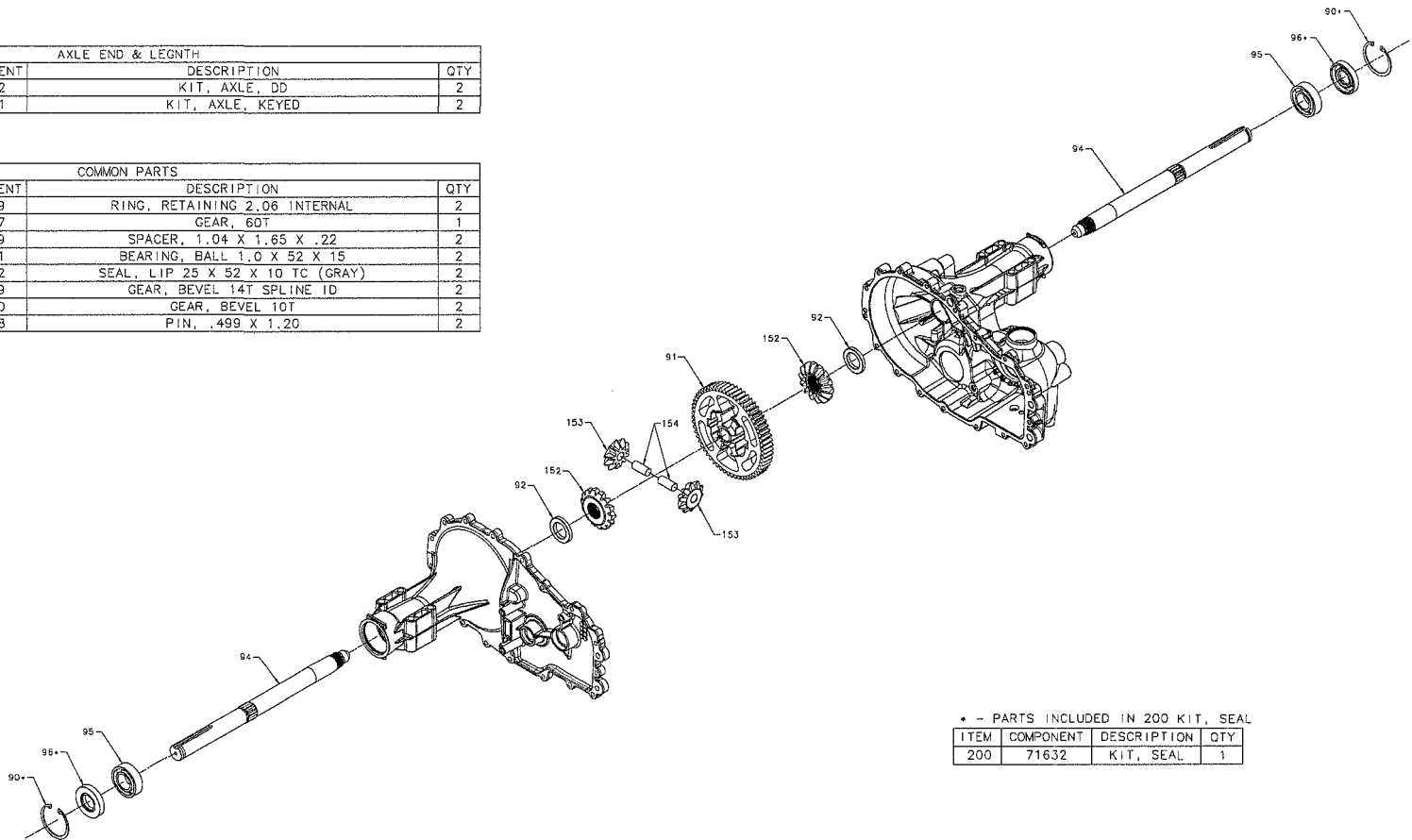
  
 CHARACTER #: 

1	2	-	3	4	5	6	-	7	8	9	10	-	11	12	13	14
---	---	---	---	---	---	---	---	---	---	---	----	---	----	----	----	----

FOR MODELS BUILT ON OR AFTER MARCH 9TH, 2009 [SN 9068YXXXX]\*  
 [FOR MODELS BUILT BEFORE MARCH 9TH, 2009 SEE PREVIOUS PAGE]

AXLE END & LENGTH				
CHAR #	ITEM	COMPONENT	DESCRIPTION	QTY
B		72022	KIT, AXLE, DD	2
C	094	72021	KIT, AXLE, KEYED	2

COMMON PARTS				
ITEM	COMPONENT	DESCRIPTION	QTY	
090	50859	RING, RETAINING 2.06 INTERNAL	2	
091	52577	GEAR, 60T	1	
092	51939	SPACER, 1.04 X 1.65 X .22	2	
095	50771	BEARING, BALL 1.0 X 52 X 15	2	
096	50772	SEAL, LIP 25 X 52 X 10 TC (GRAY)	2	
152	52599	GEAR, BEVEL 14T SPLINE ID	2	
153	52600	GEAR, BEVEL 10T	2	
154	52608	PIN, .499 X 1.20	2	



\* - PARTS INCLUDED IN 200 KIT, SEAL

ITEM	COMPONENT	DESCRIPTION	QTY
200	71632	KIT, SEAL	1

\*NOTE: HOW TO READ BAR CODE LABEL SERIAL NUMBER DATE CODE  
 EX. 9XXXXXXX CHARACTER 1 = YEAR (2009), CHARACTERS 2, 3 & 4 ARE 1234  
 JULIAN DATE CODE 001 THRU 365 (001 - JAN 1; 032 - FEB 1; 365 - DEC 31)



# G700 SERVICE SCHEMATIC

MODEL NUMBER: 

G	7	*			
---	---	---	--	--	--

 - 

*					
---	--	--	--	--	--

 - 

*					
---	--	--	--	--	--

 - 

*					
---	--	--	--	--	--

CHARACTER #: 

1	2	3	4	5	6
---	---	---	---	---	---

 - 

7	8	9	10	11	12
---	---	---	----	----	----

 - 

13	14
----	----

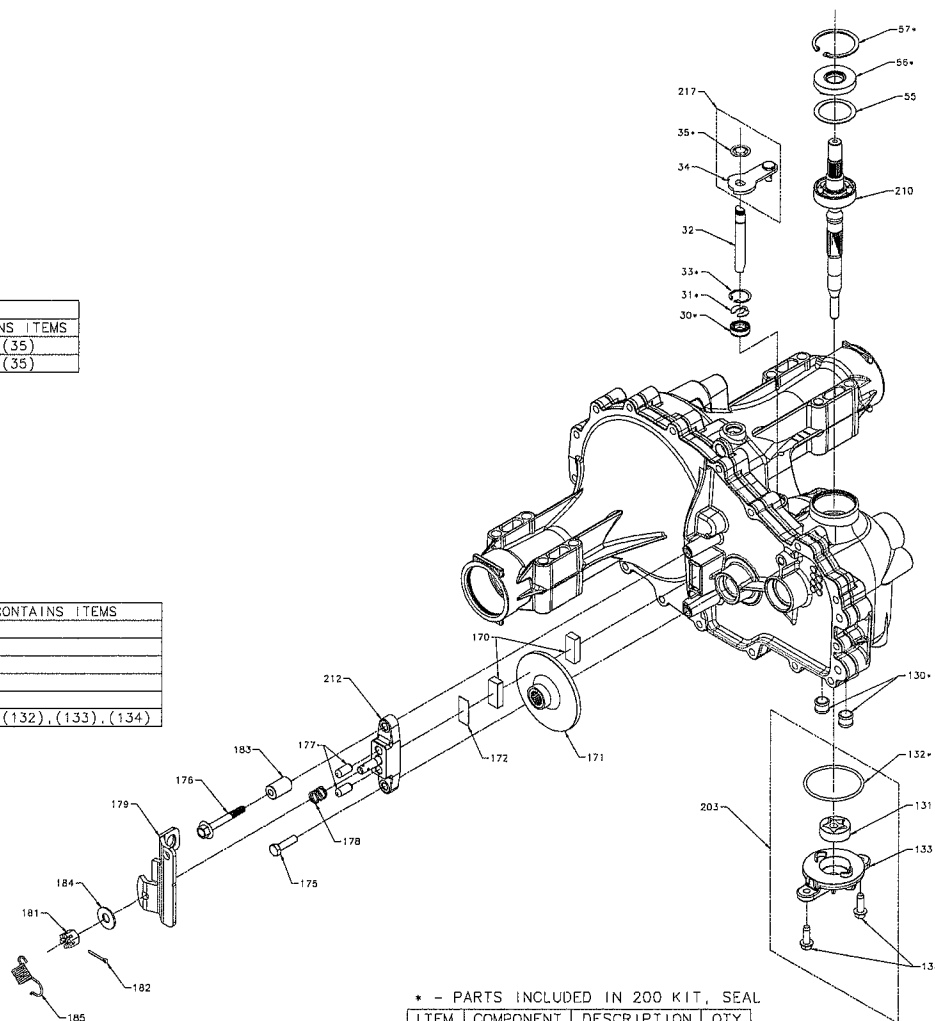
BRAKE ARM				
CHAR 7	ITEM	COMPONENT	DESCRIPTION	QTY
1	179	50911	ARM, BRAKE	1

BRAKE				
CHAR 7	ITEM	COMPONENT	DESCRIPTION	QTY
1	170	44132	PUCK, BRAKE	2
1	171	52582	ROTOR, BRAKE	1
1	172	44134	PLATE, PUCK	1
1	175	44433	BOLT, HEX HEAD 1/4-20 X 1 W/PATCH	1
1	176	51146	BOLT, HEX HEAD 1/4-20 X 2 W/PATCH	1
1	177	44127	PIN, BRK .31 X .73 PLATED	2
1	178	50919	SPRING, COMP BRAKE ANTI-DRAG	1
1	181	44142	NUT, CASTLE 5/16-24 PL	1
1	182	44101	PIN, COTTER 3/32 X 3/4	1
1	183	23711	SPACER, .26 X .57 X .87	1
1	184	44130	WASHER, .27 X .88 X .12	1
1	185	50884	SPRING, BRAKE ARM BIAS	1
1	212	70633	KIT, BRAKE-YOKE	1

BYPASS ARM					
CHAR 11	ITEM	COMPONENT	DESCRIPTION	QTY	CONTAINS ITEMS
1	217	70891	KIT, BYPASS ARM	1	34, (35)
2		71006	KIT, BYPASS ARM	1	34, (35)

COMMON PARTS				
ITEM	COMPONENT	DESCRIPTION	QTY	
030	51626	SEAL, LIP .375 X .75 X .25	1	
031	51628	RING, RETAINING .375 EXTERNAL	1	
032	52136	ROD, BYPASS	1	
033	51627	RING, RETAINING .750 INTERNAL	1	
035	51630	RING, RETAINING .375 EXTERNAL	1	
055	50951	WASHER, 1.23 X 1.56 X .04	1	
056	51161	SEAL, LIP 17 X 40 X 7	1	
057	50329	RING, RETAINING 1.575 INTERNAL	1	
210	71442	KIT, INPUT SHAFT	1	

CHAR 3	ITEM	COMPONENT	DESCRIPTION	QTY	CONTAINS ITEMS
B	130	52157	TUBE, CONNECTING	2	
B	131	50273	GEROTOR ASSEMBLY (1.9 cc/rev)	1	
B	132	52250	O-RING -137 .103 X 2.050	1	
B	133	52688	COVER, CHARGE PUMP	1	
B	134	50752	SCREW, HEX FLANGE 1/4-20 X .75	2	
B	203	71411	KIT, CHARGE	1	(131),(132),(133),(134)



\* - PARTS INCLUDED IN 200 KIT, SEAL

ITEM	COMPONENT	DESCRIPTION	QTY
200	71632	KIT, SEAL	1

{ } \* INDICATES THAT PART IS LISTED ELSEWHERE IN THE BOM AND IS AVAILABLE AS AN INDIVIDUAL PART.



# G700 SERVICE SCHEMATIC

MODEL NUMBER: 

G	7			*	
1	2	3	4	5	6

 - 

7	8	9	10

 - 

		*	*
11	12	13	14

CHARACTER #: 

1	2	3	4	5	6
---	---	---	---	---	---

 - 

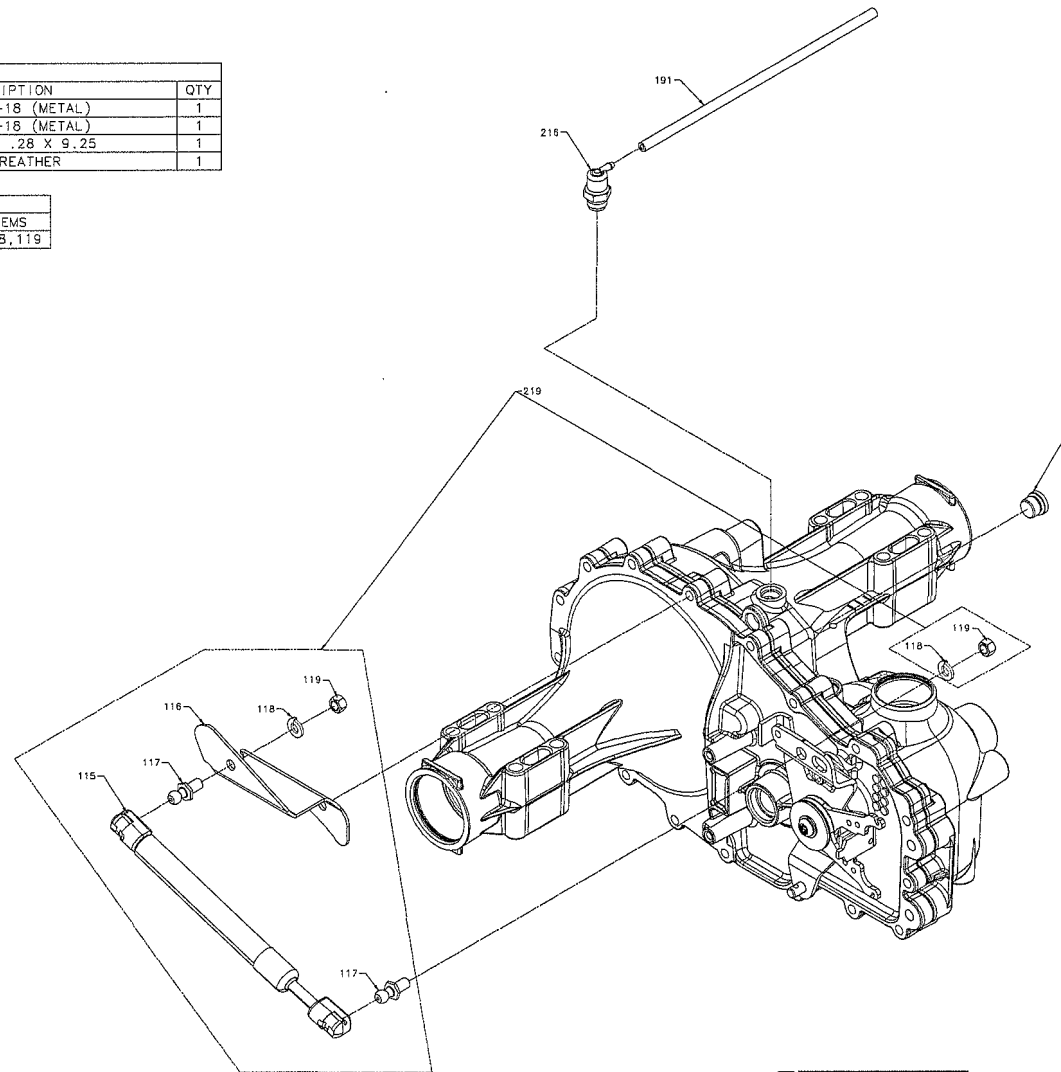
7	8	9	10
---	---	---	----

 - 

11	12	13	14
----	----	----	----

BREATHER FITTINGS					
CHAR 5	CHAR 13	ITEM	COMPONENT	DESCRIPTION	QTY
A THRU G	X	004	9005110-5600	PLUG 9/16-18 (METAL)	1
		004	9005110-5600	PLUG 9/16-18 (METAL)	1
	C	191	53241	TUBE .16 X .28 X 9.25	1
		216	71524	KIT, BREATHER	1

DAMPER					
CHAR 14	ITEM	COMPONENT	DESCRIPTION	QTY	CONTAINS ITEMS
A	219	71878	KIT, DAMPER	1	115,116,117,118,119



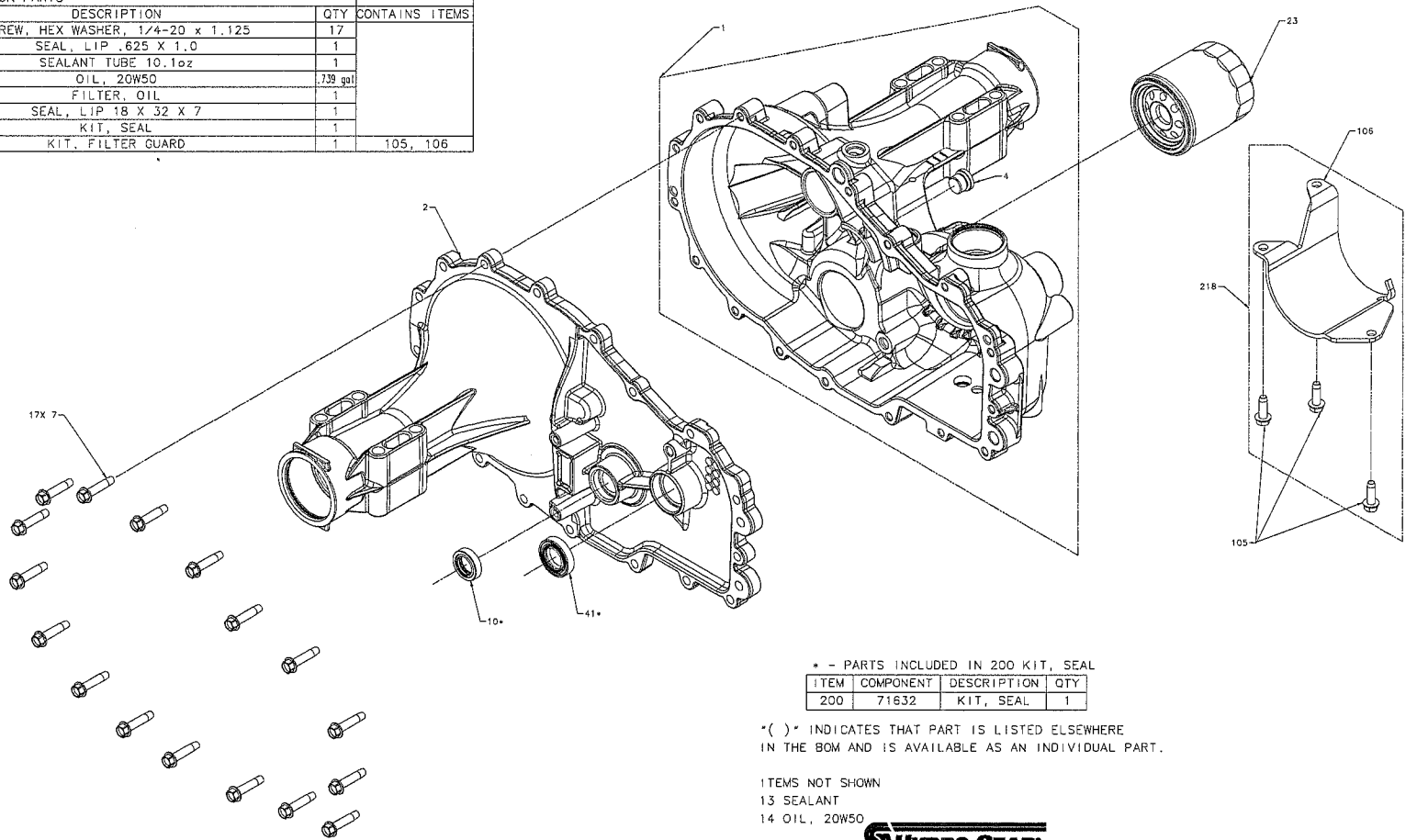


# G700 SERVICE SCHEMATIC

MODEL NUMBER: G 7 - - - \* - - -  
 CHARACTER #: 1 2 - 3 4 5 6 - 7 8 9 10 - 11 12 13 14

HOUSING OPTIONS					
CHAR 5	ITEM	COMPONENT	DESCRIPTION	QTY	CONTAINS ITEMS
A THRU G	001	71529	KIT, HOUSING, MAIN	1	1, (4)
A THRU T	002	71630	KIT, HOUSING, SIDE	1	

COMMON PARTS					
ITEM	COMPONENT	DESCRIPTION	QTY	CONTAINS ITEMS	
007	53246	SCREW, HEX WASHER, 1/4-20 x 1.125	17		
010	44761	SEAL, LIP .625 X 1.0	1		
013	50928	SEALANT TUBE 10.1oz	1		
014		OIL, 20W50	.739 gal		
023	52114	FILTER, OIL	1		
041	51140	SEAL, LIP 18 X 32 X 7	1		
200	71632	KIT, SEAL	1		
218	71854	KIT, FILTER GUARD	1	105, 106	



\* - PARTS INCLUDED IN 200 KIT, SEAL

ITEM	COMPONENT	DESCRIPTION	QTY
200	71632	KIT, SEAL	1

\*( ) \* INDICATES THAT PART IS LISTED ELSEWHERE IN THE BOM AND IS AVAILABLE AS AN INDIVIDUAL PART.

ITEMS NOT SHOWN  
 13 SEALANT  
 14 OIL, 20W50



# G700 SERVICE SCHEMATIC

MODEL NUMBER: 

G	7				
---	---	--	--	--	--

 - 

--	--	--	--	--	--

 - 

--	--	--	--	--	--

 - 

	*				
--	---	--	--	--	--

  
 CHARACTER #: 

1	2				
---	---	--	--	--	--

 - 

3	4	5	6		
---	---	---	---	--	--

 - 

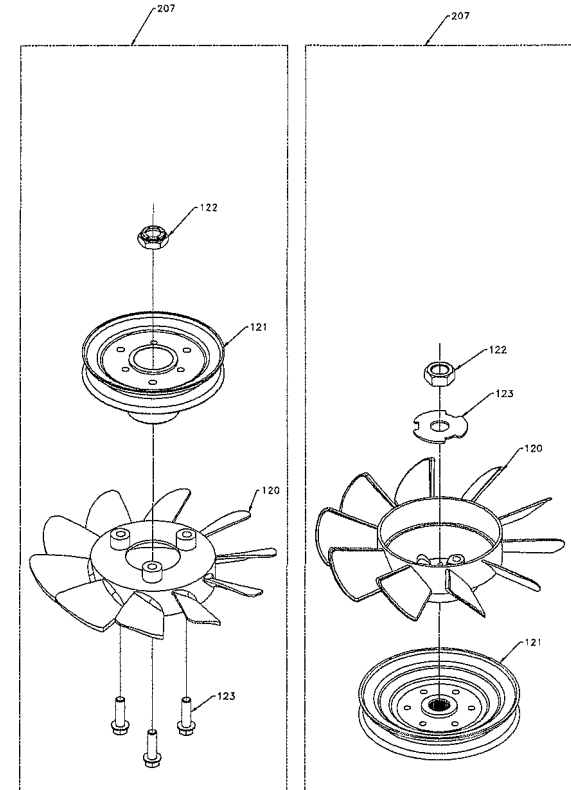
7	8	9	10		
---	---	---	----	--	--

 - 

11	12	13	14		
----	----	----	----	--	--

FAN/PULLEY				
CHAR 12	ITEM	COMPONENT	DESCRIPTION	QTY
C	120	52913	FAN 7.0 (10 BLADE)	1
	121	52915	PULLEY	1
	122	51244	HEX LOCK NUT 1/2-20 (NYLON INSERT)	1
	123	51076	SCREW HEX 1/4-20 X .875	3
D	120	52955	FAN 7.0 (10 BLADE)	1
	121	51585	PULLEY	1
	122	51244	HEX LOCK NUT 1/2-20 (NYLON INSERT)	1
	123	51076	SCREW HEX 1/4-20 X .875	3
E	120	51862	FAN 7.0 (10 BLADE)	1
	121	51875	PULLEY	1
	122	44133	NUT, HEX JAM 1/2-20 W/ PATCH	1
	123	51523	WASHER, OD SLOTTED	1
F	120	51862	FAN 7.0 (10 BLADE)	1
	121	53223	PULLEY, 3.86 INCH	1
	122	51244	HEX LOCK NUT 1/2-20 (NYLON INSERT)	1
G	121	51585	PULLEY, 4.00 INCH	1
	122	51244	HEX LOCK NUT 1/2-20 (NYLON INSERT)	1
	123	51523	WASHER, OD SLOTTED	1

CHAR 12	ITEM	COMPONENT	DESCRIPTION	QTY	CONTAINS ITEMS
C	207	71698	KIT, FAN/PULLEY	1	(120),(121),(122),(123)
D	207	71713	KIT, FAN/PULLEY	1	(120),(121),(122),(123)
E	207	70489	KIT, FAN/PULLEY	1	(120),(121),(122),(123)
F	207	71832	KIT, FAN/PULLEY	1	(120),(121),(122),(123)
G	207	72094	KIT, PULLEY	1	(121),(122)



\*( ) \* INDICATES THAT PART IS LISTED ELSEWHERE IN THE BOM AND IS AVAILABLE AS AN INDIVIDUAL PART.

